



# AVaproject 2010 Revision Overview

A Brief Outline of the New Features and Functionality of AVaproject 2010

## Powerful New User Interface

Users are now able to make additions and changes to both Hardware Groups and Openings Schedule(s) on the same screen! All reports and associated documents are immediately updated throughout the project file with every edit.

A new "Openings" tab is located at the bottom of the Hardware Group editing screen. Once activated, a fully functional Openings Schedule will appear - All openings to which the selected Hardware Group applies are displayed.

Openings can be added, edited or removed just as if being accessed from the native Openings Schedule.

The screenshot displays the AVaproject 2010 software interface. The main window is titled "AVaproject - [Northwest Conference & Trade Centre (Bluebook Project 2010 - July 1 Build)]". The interface is divided into several sections:

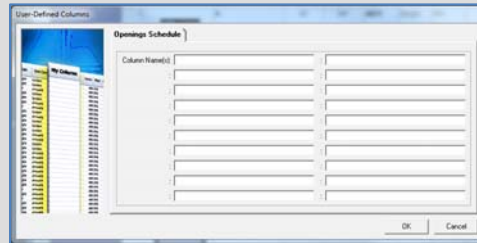
- Project Tree (Left):** Shows a hierarchy including Project Info, Project Log, Preamble, Accessories & Misc., Division 8 (Doors & Frames, Openings Schedule), Hardware (List, Misc. Items, Groups (E), A, A.1, A.2, B, C, D), Division 10 (Washrooms, Washrooms Schedule, Partitions, Item List, Groups), and Accessories (Item List, Groups).
- Hardware Group Table (Top Right):** Titled "D8 Hardware Group - A", it lists hardware items with columns for Qty (Active/Inactive/Off-Door), Short Code, Catalog, Product Code, Finish (BHMA), Handing, and Remarks.
 

Qty (Active)	Qty (Inactive)	Qty (Off-Door)	Short Code	Catalog	Product Code	Finish (BHMA)	Handing	Remarks
3			H1	Hager	BB1199 4 1/2" x 4 1/2" US3		N/A	
1			L2	Schlage	A53PD GEO 605	605	N/A	
1			C1	LCN	4012 REG AL (Hand)		Reversible	
1			FSTOP 1	Hager	241F x US3		N/A	
1			TH1	National Guard	410DKB-36"		N/A	
1			GA1	National Guard	5050B-204"		N/A	
1				Rockwood	K1038		N/A	
- Opening Schedule Table (Bottom Right):** A detailed table showing opening specifications.
 

Qty	Elevation	Nominal Width	Nominal Height	Type	Hand	Label	Frame Series	Frame Matl	Frame Gauge	Frame Profile	Jamb Depth	Facing (Jamb, Hd)	Fram Construc
4		42"	84"	Single	LH	AU	SU	CRS	16	SU	5 3/4"		KD
1	E-19	36"	84"	Single	RH		SU-F	CRS	16	SU	5 3/4"		CUT
1		36"	84"	Single	LH		C	CRS	18	TA-23	5 3/4"	1 25/32"	KD
1		36"	84"	Single	LH		C	CRS	18	TA-8	5 3/4"	1 23/32"	KD
5		36"	84"	Single	LH	CU	SU	A60	16	SU	5 3/4"		KD
1		36"	84"	Single	LH	CU	SU	A60	16	SU	5 3/4"		KD
1	E-05	36"	84"	Single	RH		SU-F	CRS	16	SU	4 3/4"		CUT
1		36"	84"	Single	LH		SU	CRS	16	SU	5 3/4"		KD
- Navigation (Bottom):** Includes "Group Notes" and "Openings" tabs.

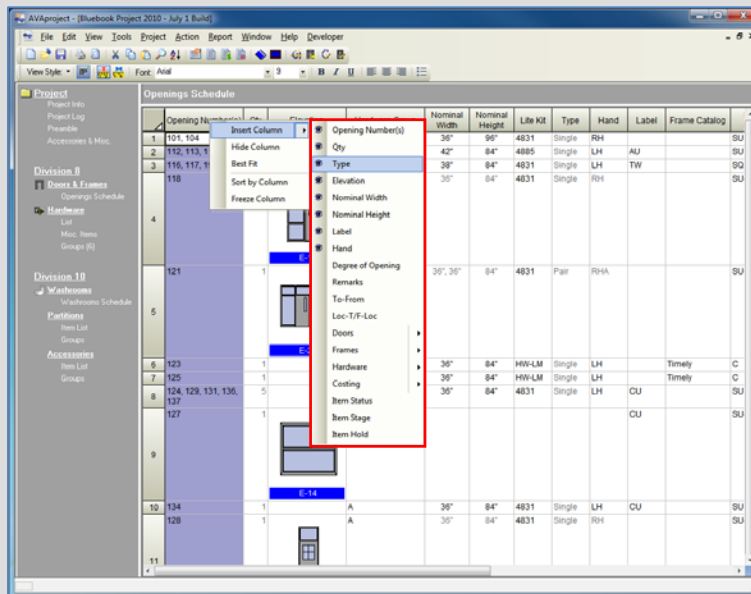
## Additional User-Defined Columns

To enable greater customization of Openings Schedules and meet the ever increasing demands of architects and general contractors, we have doubled the number of "User-Defined" columns from 10 to 20.



## Identifying Displayed Columns

A visual aid has been added to assist in determining what column(s) are currently being displayed in the particular schedule, group or list. Displayed columns are identified in the "Insert Column" menu by a blue eyeball icon.





## Communicating Frames

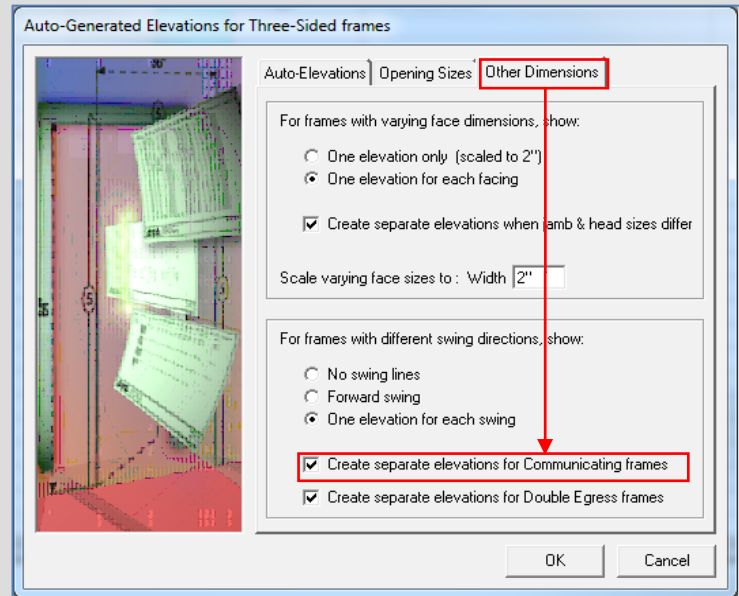
**AV**Project now fully supports communicating frames. Three new component types have been introduced:

- Hinge/Strike Jambs
- Double Hinge Jambs
- Double Strike Jambs

Additionally, new handing attributes include:

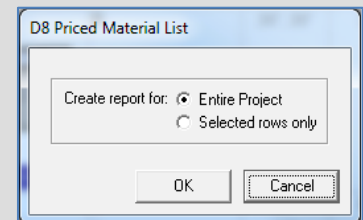
- LH/LH Communicating
- RH/RH Communicating
- LH/RH Communicating
- RH/LH Communicating

An option has also been added to the "*Other Dimensions*" tab of the "*Auto-Generated Elevations*" dialog (available from the "*Project*" menu) to separate communicating frames from swing line bulking.



## Three New Report Shortcuts

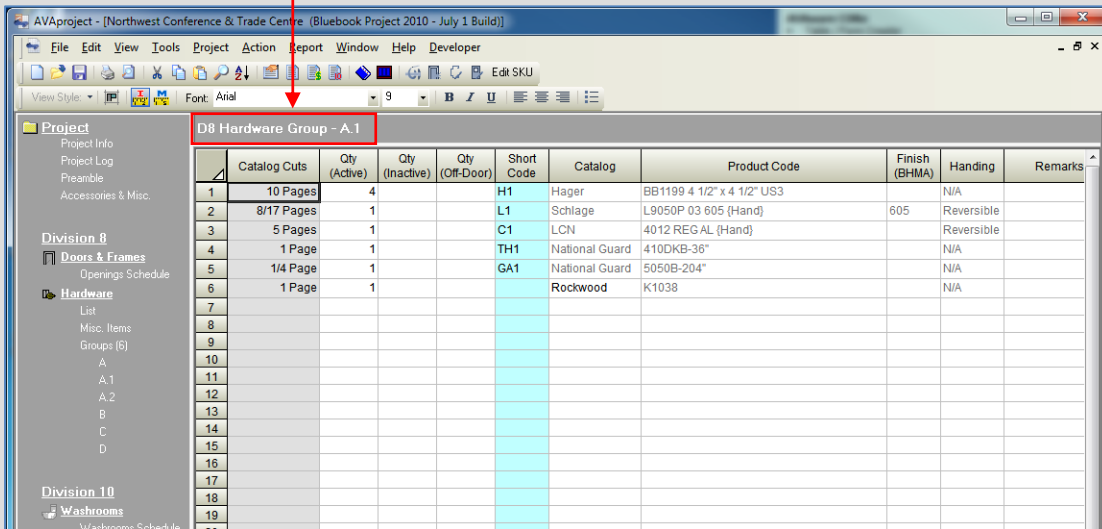
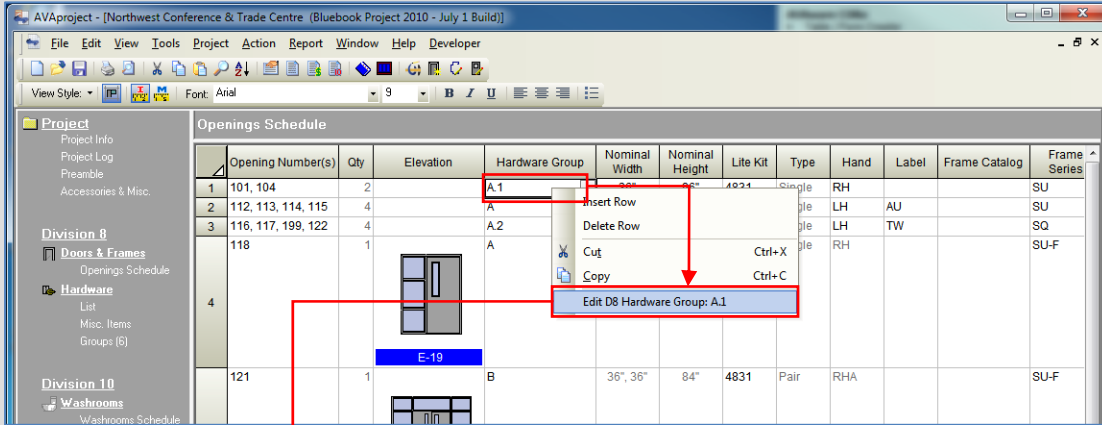
Create a complete Priced Materials List, Hardware Schedule or Hardware Groups report based only on selected rows. All of the Openings, Frame and Door details, Preps, etc. that are associated with the current selection are included in the report.





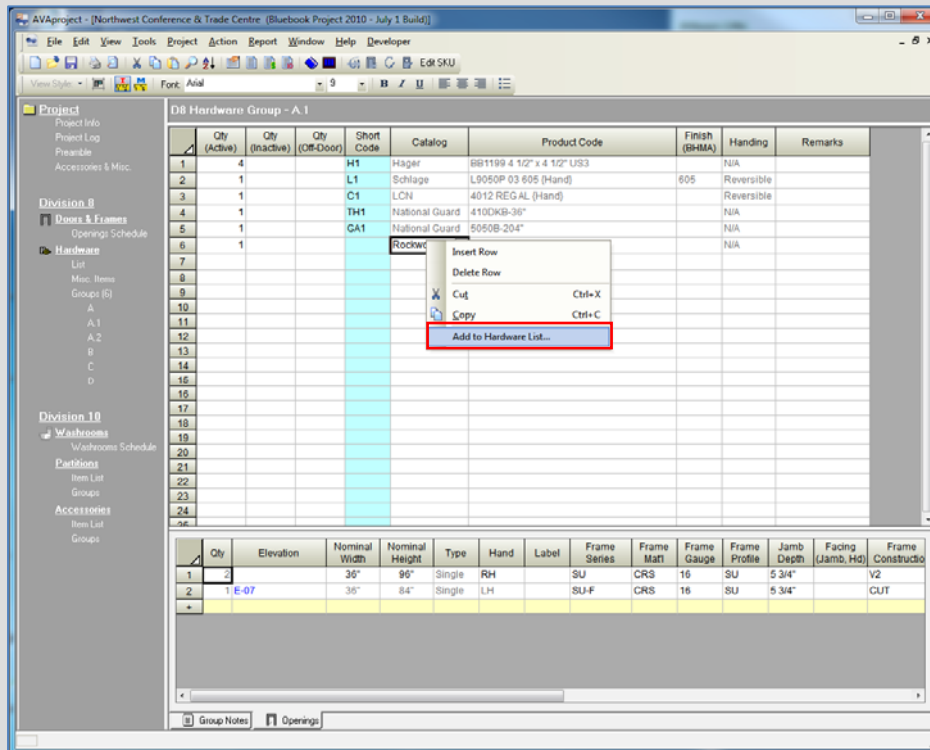
## Access and Edit Hardware Groups Shortcut

A new shortcut enables users to move quickly into editing a specific Hardware Group from an Openings Schedule - simply "right-click" the Hardware Group in the Openings Schedule and click to edit the group.

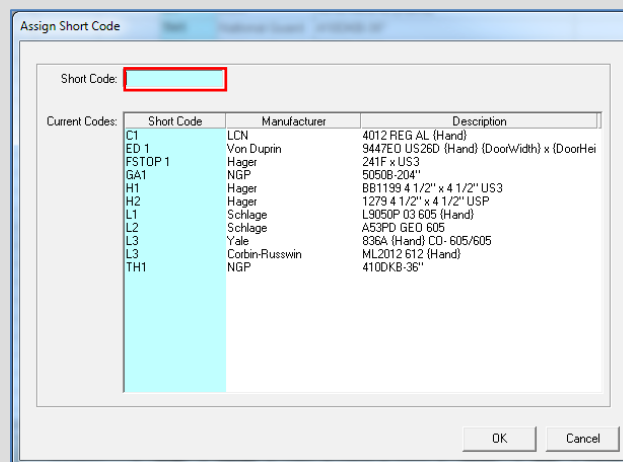


## Auto Update of Hardware List

The Hardware List can now be updated directly from within a Hardware Group. Simply "right-click" the new hardware item and select "Add to Hardware List".

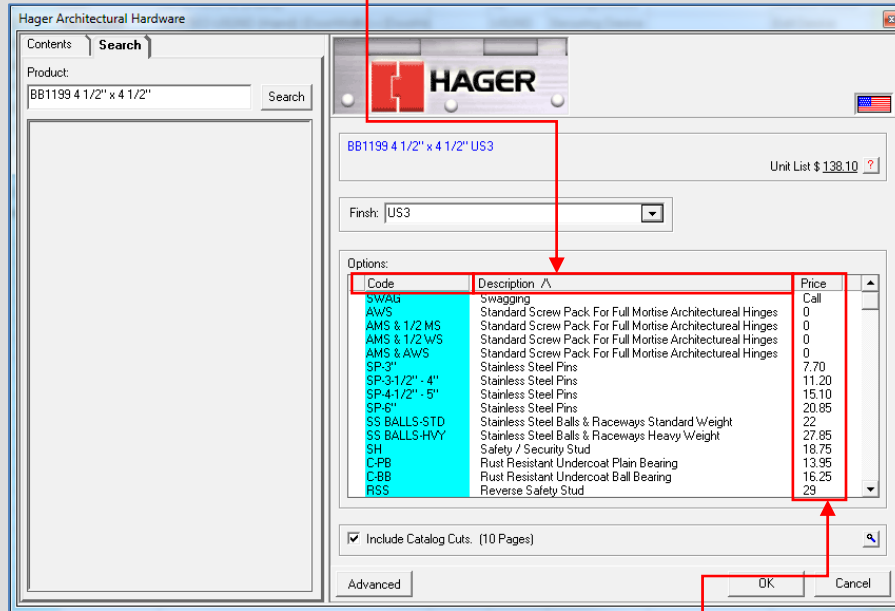


When adding a new hardware item to the Hardware List from the Hardware Group editing screen (without specifying a Short Code), a prompt is displayed which allows the user to assign a Short Code to the new item.



## Sort Hardware Options

The option codes and descriptions within the Product Builder window now support ascending and descending sort ordering. Simply click the **list header** to sort.



Hager Architectural Hardware

Contents Search

Product: BB1199 4 1/2" x 4 1/2" Search

HAGER

BB1199 4 1/2" x 4 1/2" US3 Unit List \$ 138.10

Finish: US3

Options:

Code	Description ^	Price
SWAS	Swagging	Call
AW5	Standard Screw Pack For Full Mortise Architectural Hinges	0
AMS & 1/2 MS	Standard Screw Pack For Full Mortise Architectural Hinges	0
AMS & 1/2 WS	Standard Screw Pack For Full Mortise Architectural Hinges	0
AMS & AWS	Standard Screw Pack For Full Mortise Architectural Hinges	0
SP-3"	Stainless Steel Pins	7.70
SP-3-1/2" - 4"	Stainless Steel Pins	11.20
SP-4-1/2" - 5"	Stainless Steel Pins	15.10
SP-6"	Stainless Steel Pins	20.85
SS BALLS-STD	Stainless Steel Balls & Raceways Standard Weight	22
SS BALLS-HVY	Stainless Steel Balls & Raceways Heavy Weight	27.85
SH	Safety / Security Stud	18.75
C-PB	Rust Resistant Undercoat Plain Bearing	13.95
C-BB	Rust Resistant Undercoat Ball Bearing	16.25
RSS	Reverse Safety Stud	29

Include Catalog Cuts: (10 Pages)

Advanced OK Cancel

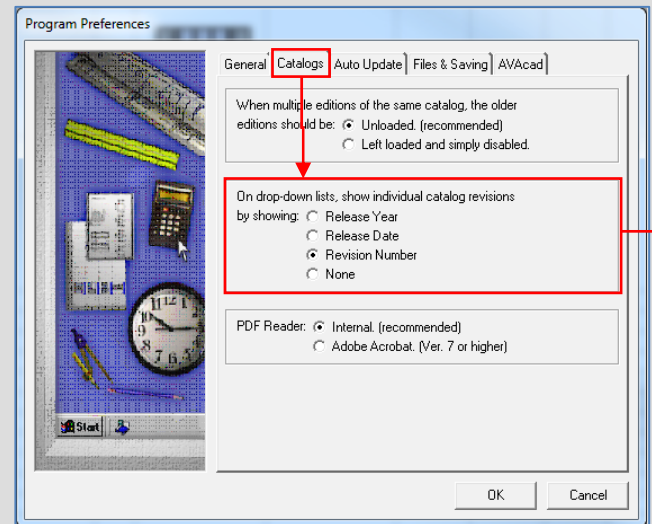
Expanding the width of the Product Builder window will allow the **price column** to be in view.

## Display the Catalog Release Year, Release Date or Revision Number within an Openings Schedule, Hardware List or Hardware Group

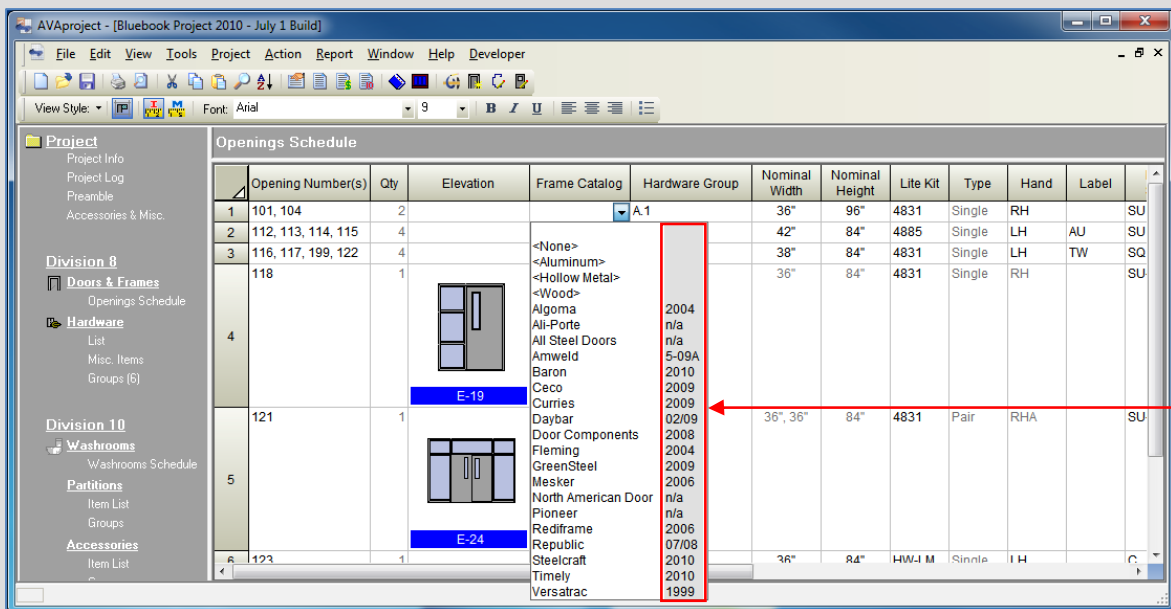
To ensure that the correct catalog is being used for the project, additional catalog details are now available to be shown in the Openings Schedule, Hardware List or Hardware Groups screens.

Four options are available for displaying details in various columns, including the "Frame Catalog" or "Door Catalog" columns in the Openings Schedule and the "Catalog" column of the Hardware List / Hardware Groups:

- Release Year
- Release Date
- Revision Number
- None



Options are set in the "Catalogs" tab of the "Program Preferences" dialog (available from the "Tools" menu). Below, catalog revision number is displayed in the "Frame Catalog" column of the Openings Schedule.

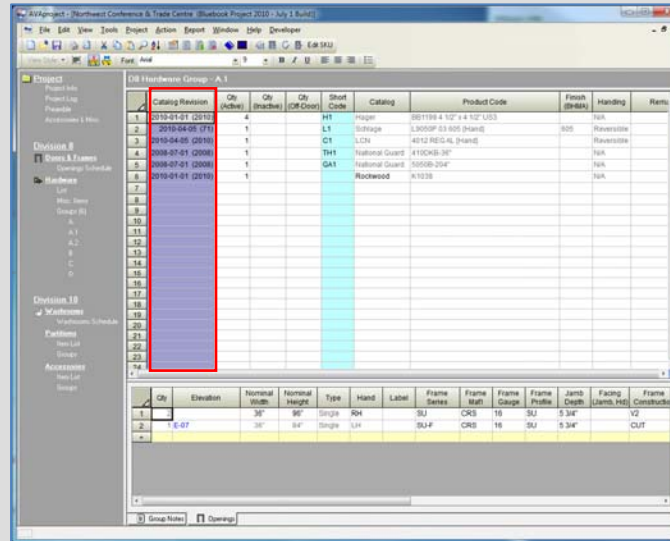


Opening Number(s)	Qty	Elevation	Frame Catalog	Hardware Group	Nominal Width	Nominal Height	Life Kit	Type	Hand	Label
1	101, 104	2		A.1	36"	96"	4831	Single	RH	SU
2	112, 113, 114, 115	4			42"	84"	4885	Single	LH	AU
3	116, 117, 199, 122	4			38"	84"	4831	Single	LH	TW
	118	1	<None> <Aluminum> <Hollow Metal> <Wood> Algoma All-Porte All Steel Doors Amweld Baron Ceco Curries Daybar Door Components Fleming GreenSteel Mesker North American Door Pioneer Rediframe Republic Steelcraft Timely Versatrac	2004 n/a n/a 5-09A 2010 2009 2009 02/09 2008 2004 2009 2006 n/a n/a 2006 07/08 2010 2010 1999						
4			E-19							
5	121	1			36", 36"	84"	4831	Pair	RHA	SU
			E-24							
6	123	1			36"	84"	HW-I M	Single	LH	C



## Display the Catalog Revision Date within a Hardware List or Hardware Groups

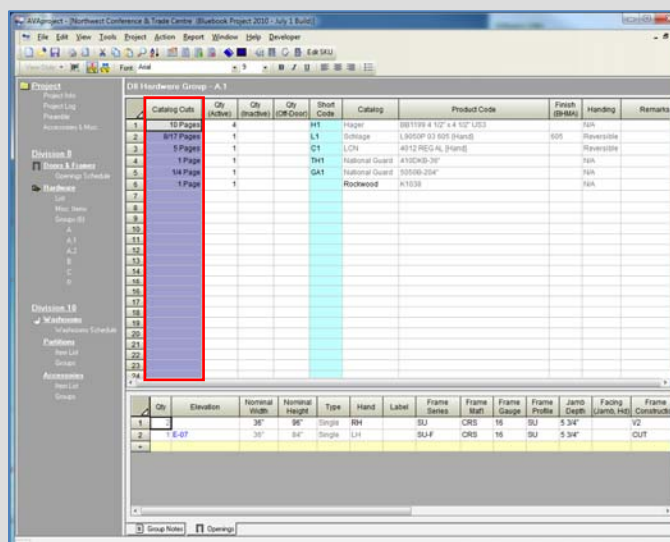
A new column is provided containing the catalog revision dates of the manufacturers' hardware catalogs. For example, the revision date is displayed within a hardware group below:



Qty	Unit	Qty (Active)	Qty (CR Order)	Short Code	Catalog	Product Code	Finish (BMA)	Handing	Remarks
4				M1	Hager	881199 4 1/2" x 4 1/2" USS		NA	
1				L1	Safage	L3009P 63 805 80405	805	Reversible	
1				C1	LCH	4312 REG AL 80405		Reversible	
5				TH1	National Guard	410CKB-30"		NA	
1				GA1	National Guard	5050B-204"		NA	
1					Rockwood	A1038		NA	

## View Catalog Cut Page Availability

The number of catalog cuts pages (both selected and total available) for a specific hardware item can now be displayed in the Hardware Groups and Hardware List.



Qty	Unit	Qty (Active)	Qty (CR Order)	Short Code	Catalog	Product Code	Finish (BMA)	Handing	Remarks
10	Pages			M1	Hager	881199 4 1/2" x 4 1/2" USS		NA	
1	Pages			L1	Safage	L3009P 63 805 80405	805	Reversible	
5	Pages			C1	LCH	4312 REG AL 80405		Reversible	
1	Page			TH1	National Guard	410CKB-30"		NA	
14	Page			GA1	National Guard	5050B-204"		NA	
1	Page				Rockwood	A1038		NA	



## Hardware Schedule Preview Screen

An option has been added to suppress the display of related Openings on each heading.

Heading #2 (Group: A.1)

36" x 84" x 1 3/4" - HM DR x HM FR			
4	Standard Hinge	Hager BB1199 4 1/2" x 4 1/2" US3	US3
1	Lockset	Schlage L9050P 03 605 LH	605
1	Surface Closer	LCN 4012 REG AL LH	AL
1	Kick Plate	Rockwood K1038	
1	Threshold	NGP 410DKB-36"	DKB
1	Gasketing	NGP 5050B-204"	B

Hardware Schedule Page 1 of 1

Orientation:  Landscape  Portrait  
Page Title: Hardware Schedule  
Heading Separator: (None)  
 Show Related Openings  Show Group Names  
 Include Data block  Show Catalog Cut Page References  
 Include Page Numbers

**Hardware Schedule**  
**(Openings on Hardware Group 'A.1')**

Heading #1 (Group: A.1)

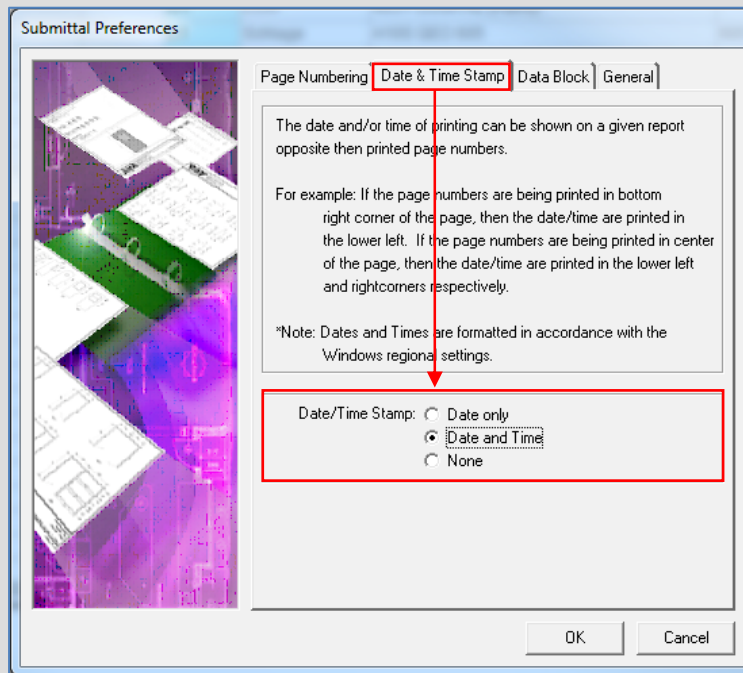
Item #1 1 Single door 101, Hallway To Office RH			
Item #2 1 Single door 104, Hallway To Office RH			
36" x 96" x 1 3/4" - HM DR x HM FR			
8	Standard Hinge	Hager BB1199 4 1/2" x 4 1/2" US3	US3
2	Lockset	Schlage L9050P 03 605 RH	605
2	Surface Closer	LCN 4012 REG AL RH	AL
2	Kick Plate	Rockwood K1038	

Hardware Schedule Page 1 of 1

Orientation:  Landscape  Portrait  
Page Title: Hardware Schedule  
Heading Separator: (None)  
 Show Related Openings  Show Group Names  
 Show Item Count for Openings  Show Catalog Cut Page References  
 Show Key Sets

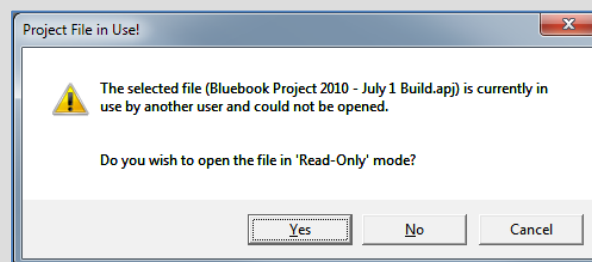
## Apply a Date/Time Stamp to Reports

To identify when reports are produced, a date and time label is now available. This new feature can be used to display the current date (or date and time) on reports. Note the format of the date and time is governed by the Windows Regional Date & Time settings. The settings for this feature can be found in the "Date & Time Stamp" tab of the "Submittal Preferences" dialog, available in the "Project" menu.



## Ability to Lock AVAProject Files

A new file locking feature prevents users from inadvertently overwriting other users' work. If a user attempts to open a file which is currently in use by someone else, a warning is displayed that optionally allows the file to be opened in a read-only mode.





## **Advanced Technology**

### 64 Bit Operating Systems:

**AVProject** is completely 64 bit compatible, supporting the most popular operating systems, including Windows Vista and Windows 7.

### The AVAware Repository

**AVProject** system resources such as catalogs, catalog cuts, logos and subscription files are no longer located in the Windows Program Files directory; they are now located in a new directory structure known as the **AVAware Repository**. The **AVAware Repository** eliminates issues that all Windows software developers are having surrounding the Windows Virtual Store and User Account Control (UAC).

The **AVProject 2010** installation includes a special Repository Migrator tool to automate the relocation of resources.

For more information about the Virtual Store, UAC and the **AVAware Repository**, see our ***AVAware Repository document***.

### Drag and Drop

Drag any **AVProject** file into the active **AVProject** window and the project file will automatically open.

**AVAware Technologies**  
2897 Brighton Road  
Oakville, Ontario  
L6H 6C9

Phone: (416) 239-9099

Fax: (416) 239-9199

<http://www.AVAware.com>